

GV300LD

AUTOMATIC LANDING DOORS

- Landing doors for high rise residential, commercial and public sector.

Upto 800.000 annual cycles.

For lifts of upto 2,5 m/sg.

Large capacity of work cycle.

- Openings from 600 to 1200mm on 2 telescopic or central panels.

- Mechanism with double lane of the lightest high resistant hardened aluminium of the market.

- Large capacity of panel weight.

- Sectional Automatic Landing doors with individual packing.

Making easier transportation.

Reducing delivery weights.

Reducing the space in refurbishment sites.

- Reduced assembly time on site.

- Finished in Epoxy in Ral 7032 or any other RAL choice.

- Finished in stainless Steel Aisi 304 SB or other finishing choices.

- Optional Aluminium threshold for door finishing on floor.

- Panels with adjustable hangers in 3 dimensions to simplify assembly and adjustment in refurbishments.

- Lock with 3 rollers assure the opening of the door even during failure of the retiring ramp skates.

- Adjustable lock in 2 dimensions of dragging rollers to guarantee reliability in assembly.

- Robust, reliable and versatile.

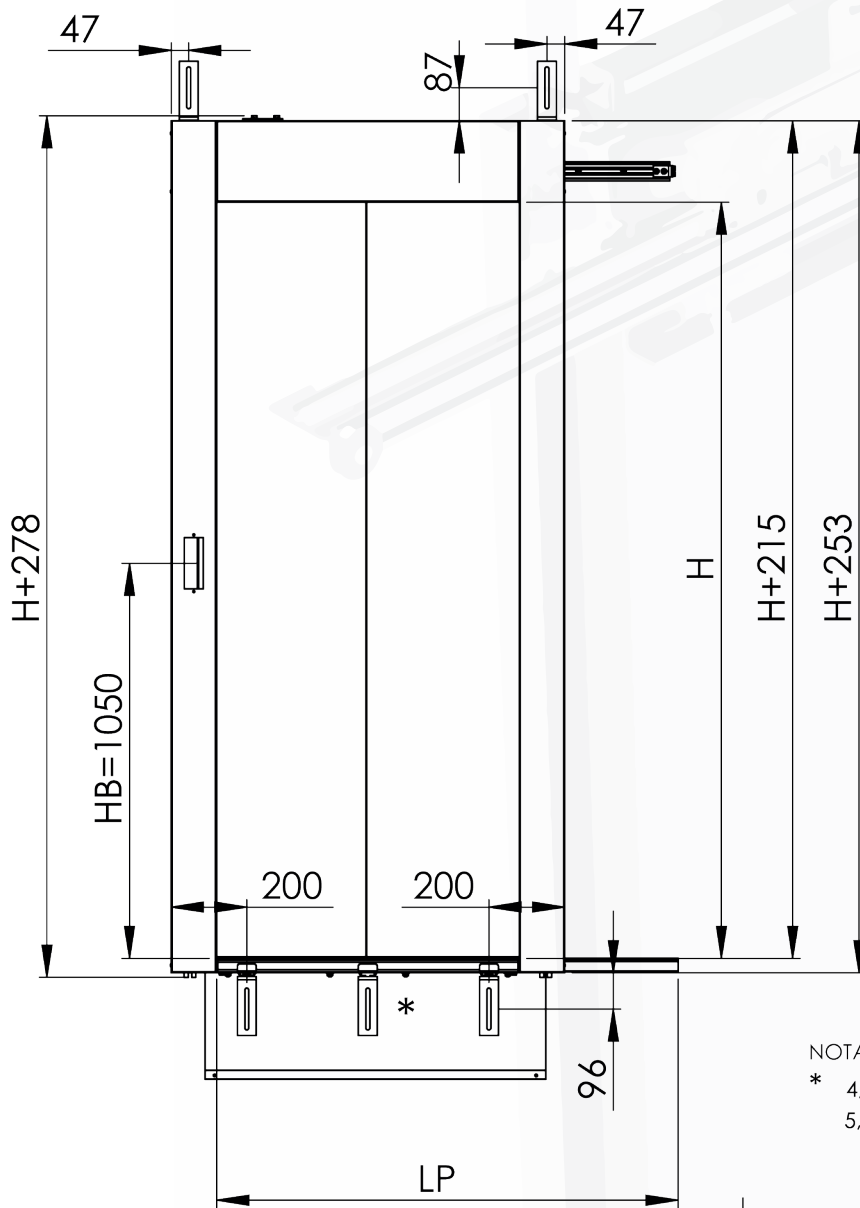
- With option of manual reopening in pit.

- With automatic, manual reset or electrical opening contact.

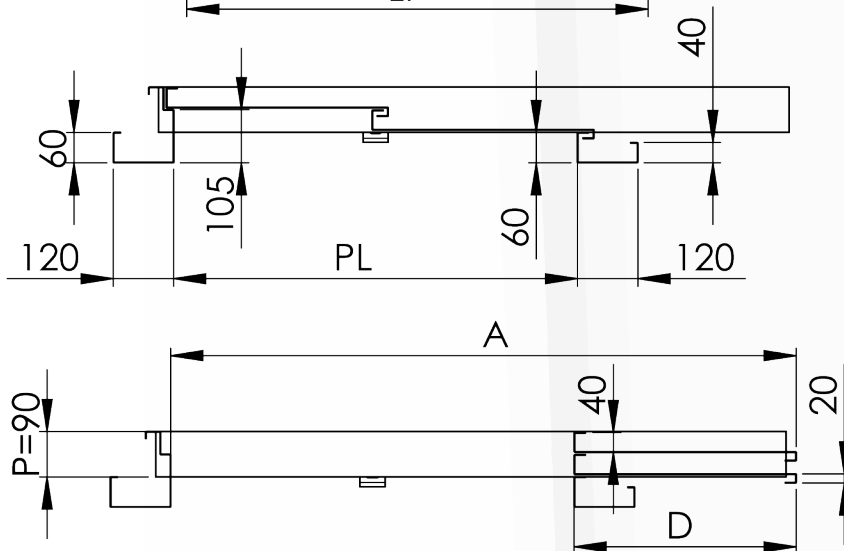
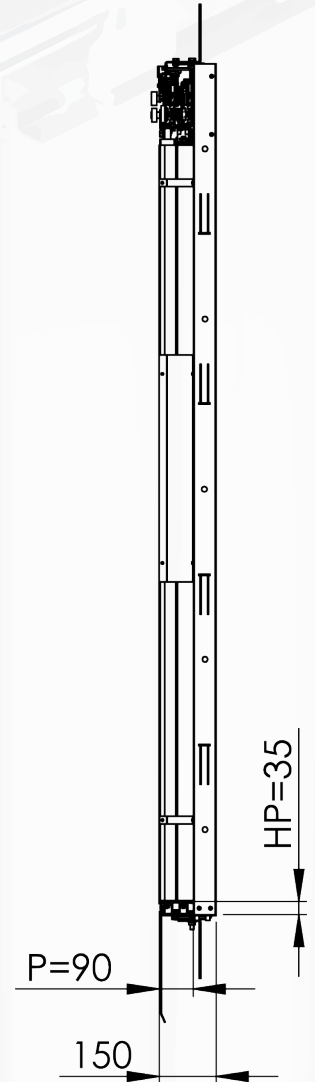
- Complies with: EN81-20/50 - EN81-58 - EN81-41 - EN81-21



LANDING DOORS 2HL

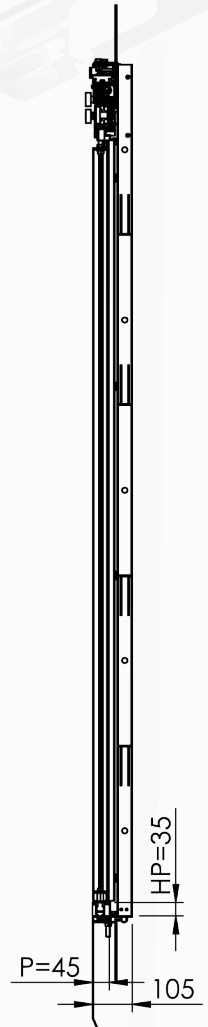
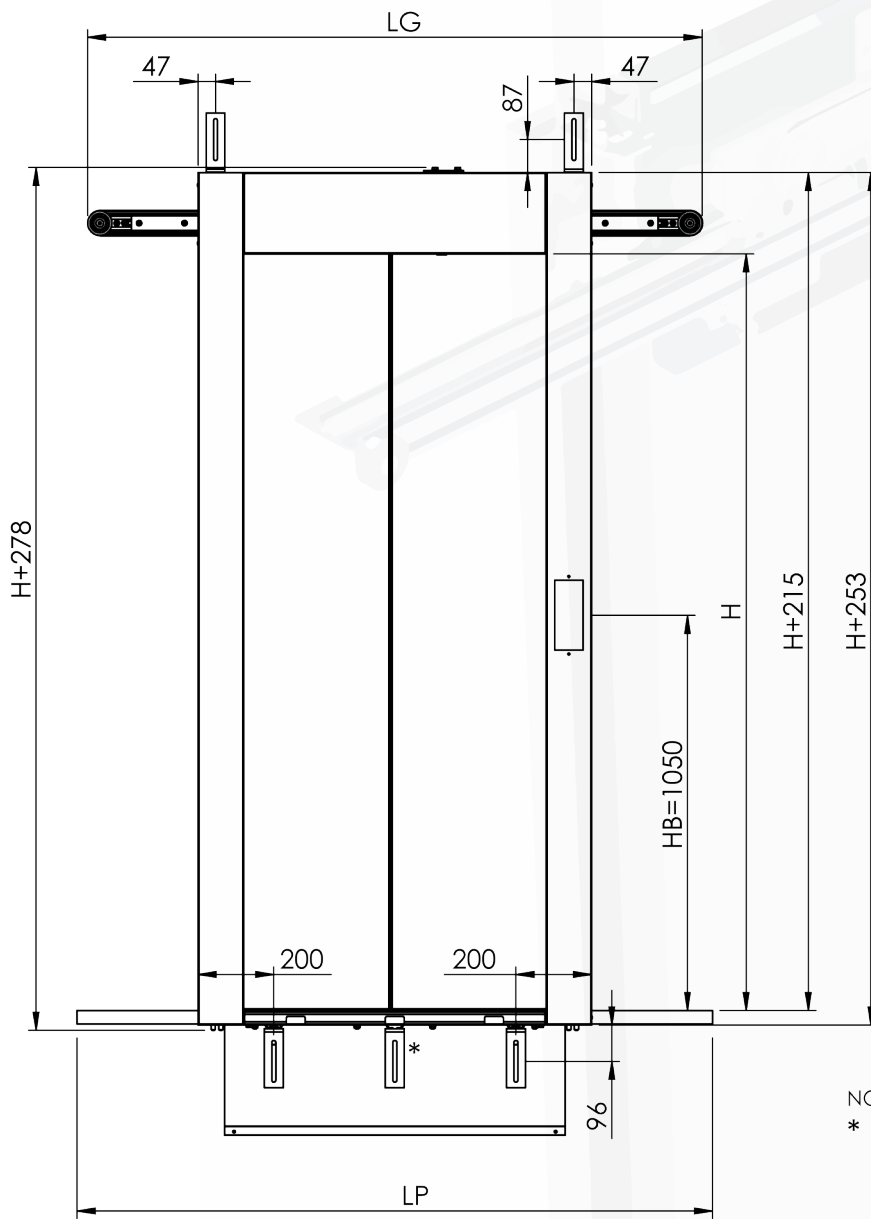


NOTA/NOTE
 * 4, $PL < 1000$
 5, $PL \geq 1000$



| PL | A | LP | D |
|------|------|------|-----|
| 600 | 940 | 920 | 340 |
| 650 | 1015 | 995 | 365 |
| 700 | 1090 | 1070 | 390 |
| 750 | 1165 | 1145 | 415 |
| 800 | 1240 | 1220 | 440 |
| 850 | 1315 | 1295 | 465 |
| 900 | 1390 | 1370 | 490 |
| 950 | 1465 | 1445 | 515 |
| 1000 | 1540 | 1520 | 540 |
| 1050 | 1615 | 1595 | 565 |
| 1100 | 1690 | 1670 | 590 |
| 1150 | 1765 | 1745 | 615 |
| 1200 | 1840 | 1820 | 640 |

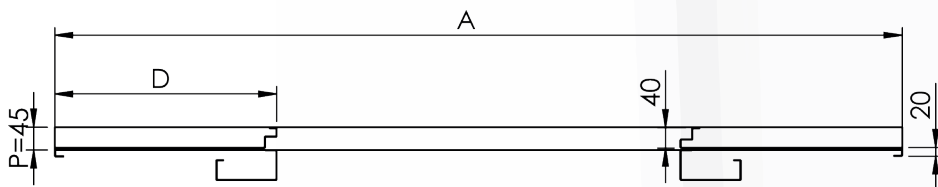
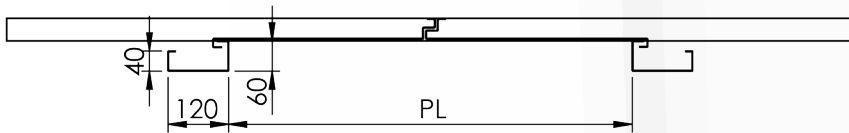
LANDING DOORS 2HC



NOTA/NOTE

- * 4, PL<1000
- 5, PL>=1000

| PL | A | LP | LG | D |
|------|------|------|------|-----|
| 600 | 1280 | 1280 | 1284 | 340 |
| 650 | 1380 | 1380 | 1359 | 365 |
| 700 | 1480 | 1480 | 1474 | 390 |
| 750 | 1580 | 1580 | 1549 | 415 |
| 800 | 1680 | 1680 | 1624 | 440 |
| 850 | 1780 | 1780 | 1699 | 465 |
| 900 | 1880 | 1880 | 1774 | 490 |
| 950 | 1980 | 1980 | 1849 | 515 |
| 1000 | 2080 | 2080 | 2044 | 540 |
| 1050 | 2180 | 2180 | 2119 | 565 |
| 1100 | 2280 | 2280 | 2194 | 590 |
| 1150 | 2380 | 2380 | 2269 | 615 |
| 1200 | 2480 | 2480 | 2344 | 640 |





Mechanical and Electrical Components
for Vertical Installations, S.L.U.

Avenida de la Industria, 15
Polígono Acceso Ademuz Peixador
46980 Paterna (Valencia) - SPAIN
Telf: (+34) 961 322 364 - Fax: (+34)963 010 203
<http://www.mevcomponents.com/>
comercial@mevcomponents.com

Note: The company reserves the right to supply materials that may differ from those described in this catalogue.

Nota: La empresa se reserva el derecho de suministrar materiales que puedan diferir levemente de los descritos en éste catálogo.